

Aufbau eines Umweltinforma- tionssystems für Kuwait *auf Basis von ArcGIS-Technologien*

Dr. Hamdy El-Gamily (KISR)

Ahmed Talaat (GISCON Solutions)

Maged Samir (ICON Technologies)

Carsten Schürmann (RRG)

14. Deutschsprachige ESRI Anwenderkonferenz

15.-17. April 2008

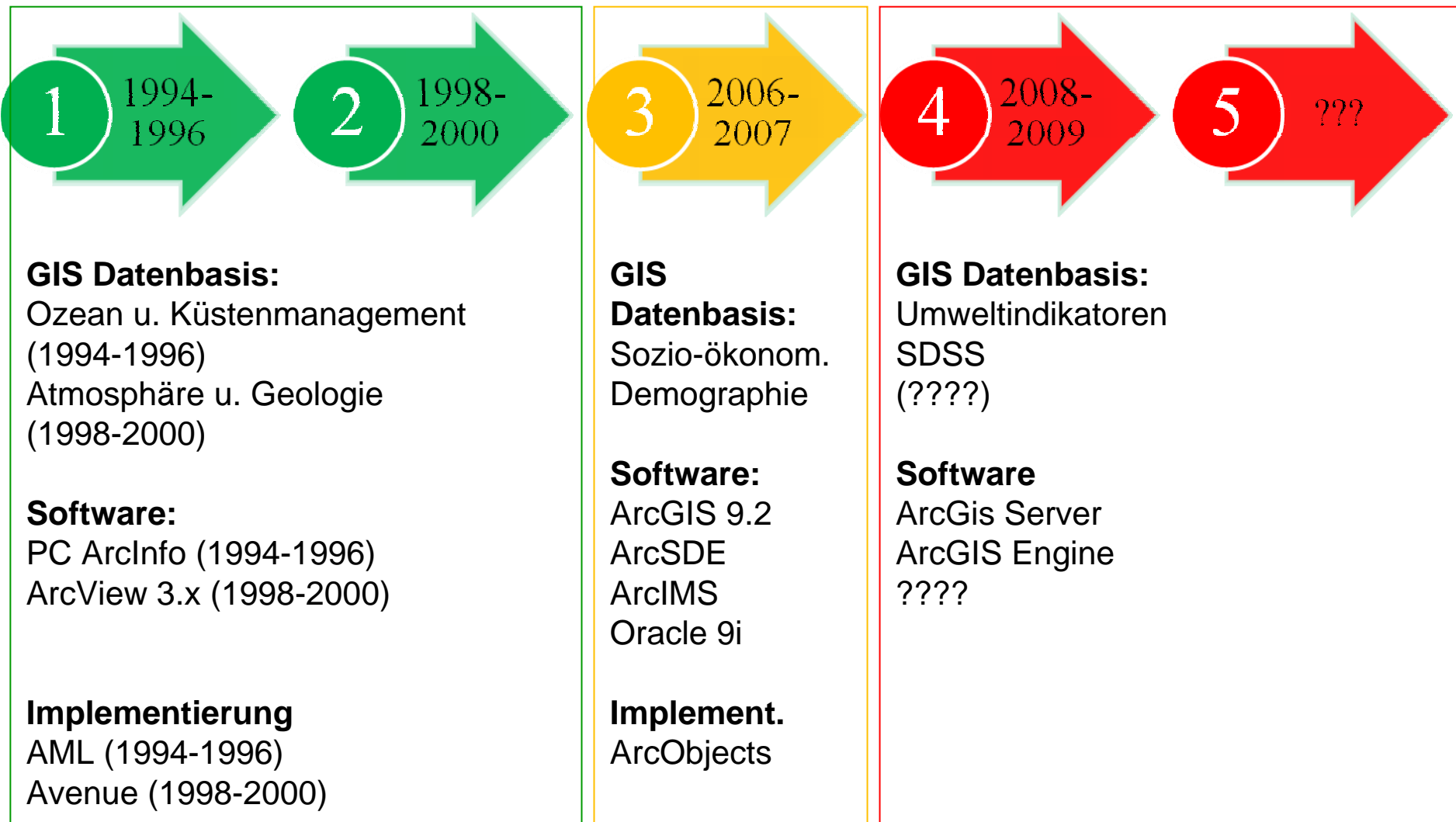
Forum am Deutschen Museum, München



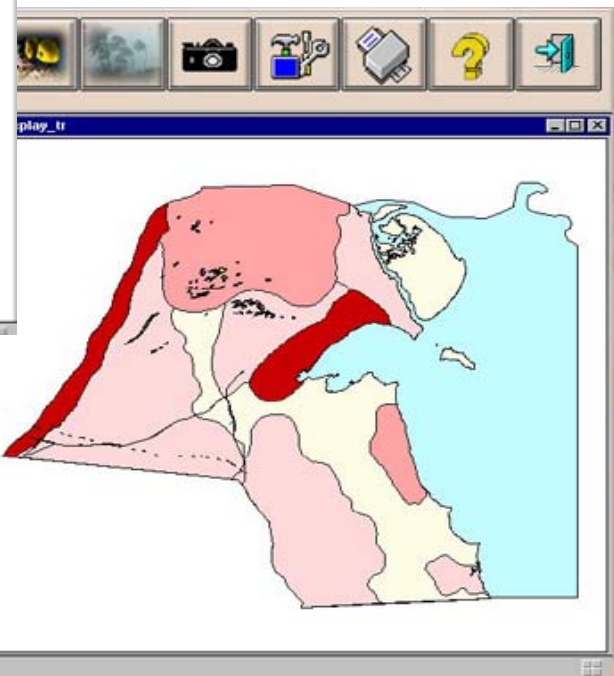
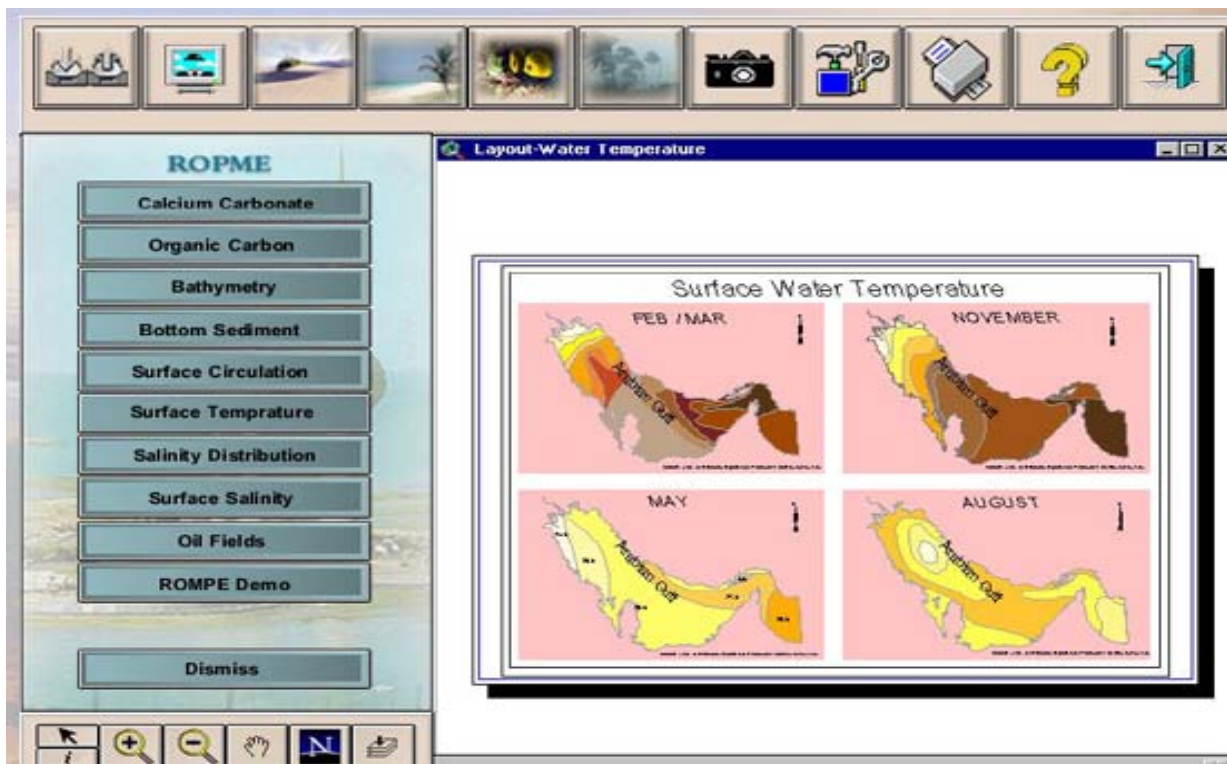
- Ausgangslage (KIEIN-I und KIEIN-II)
- Überblick über KIEIN-III
- Die Einzelmodule
- Die KIEIN-III Datenbasis

Ausgangslage (KIEIN-I und KIEIN-II)

- Bildung eines Netzwerkes zur **Generierung** und **Verbreitung** von **Umweltinformationen** in Kuwait.
- Unterstützung von **Entscheidungsträgern, Planern** und **Wissenschaftlern** durch die Bereitstellung und Analyse raumbezogener Umweltinformationen.
- **Weiterbildung** in den Bereichen **GIS Technologien** und **Umweltwissenschaften**



KIEN-II ArcView Applikation

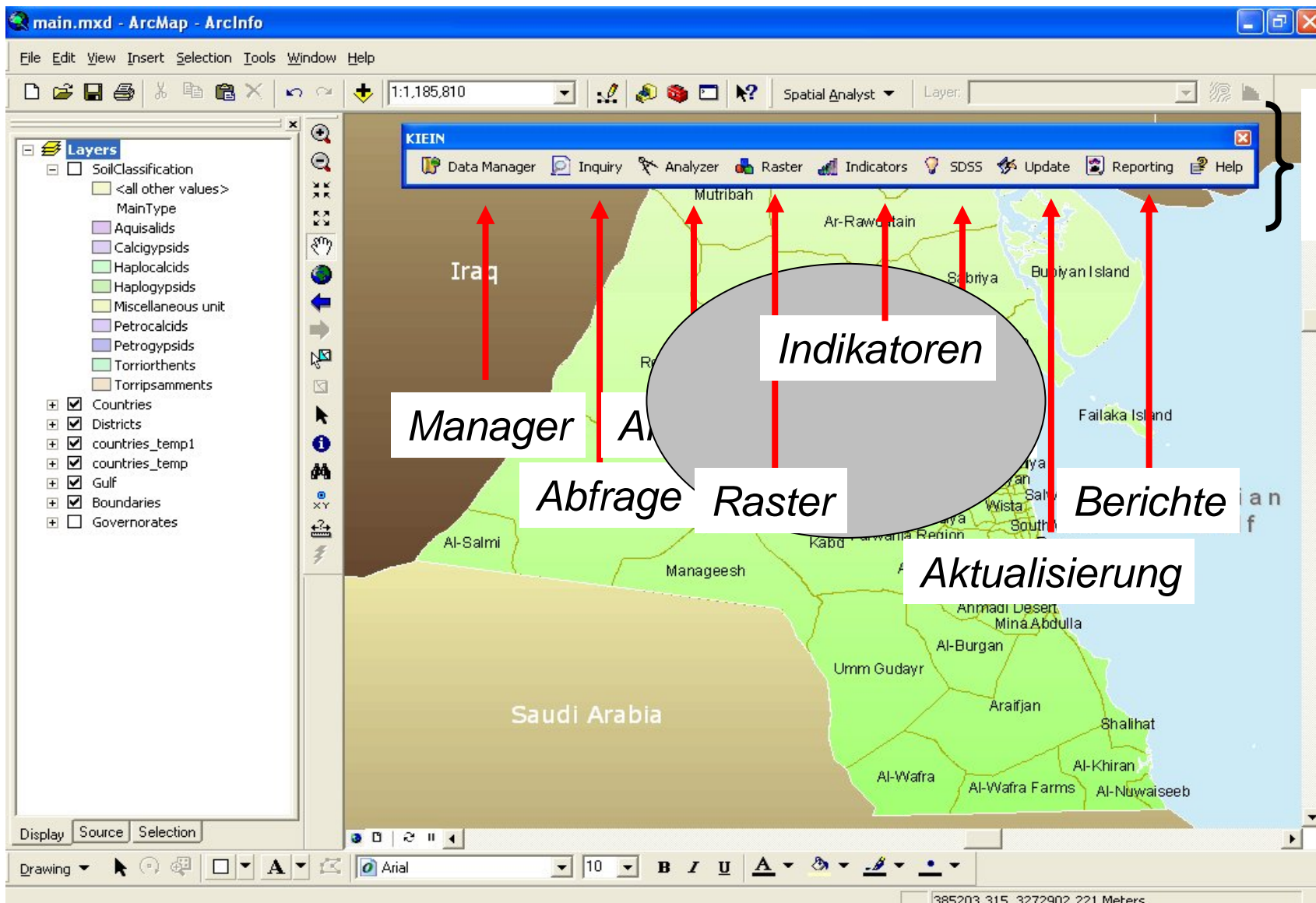


KI EIN-III Überblick

- **Kuwait Integrated Environmental Information Network (KIEIN)**
- **Kuwait Institute for Scientific Research (KISR)**
- Finanziert durch **UNDP**-Kuwait
- **Projektkonsortium Phase III:**
 - **Kuwait GIS**, Kuwait: lokaler Partner, Projektkoordination
 - **GISCON Solutions**, BRD: GIS, Planung, Design, Qualitätskontrolle
 - **Icon Technologies**, Ägypten: Implementierung, Programmierung, Training



- **Migration** existierender Daten nach KIEIN-III
- Integration neuer **sozio-ökonomischer Daten** in KIEIN-III
- Entwicklung neuer **GIS Desktop Anwendungen**
- Entwicklung von **Web-basierten GIS Anwendungen**
- **Weiterbildung** KISR Mitarbeiter



KIEIN
Toolbar
ArcMap

Indikatoren

Manager

Abfrage

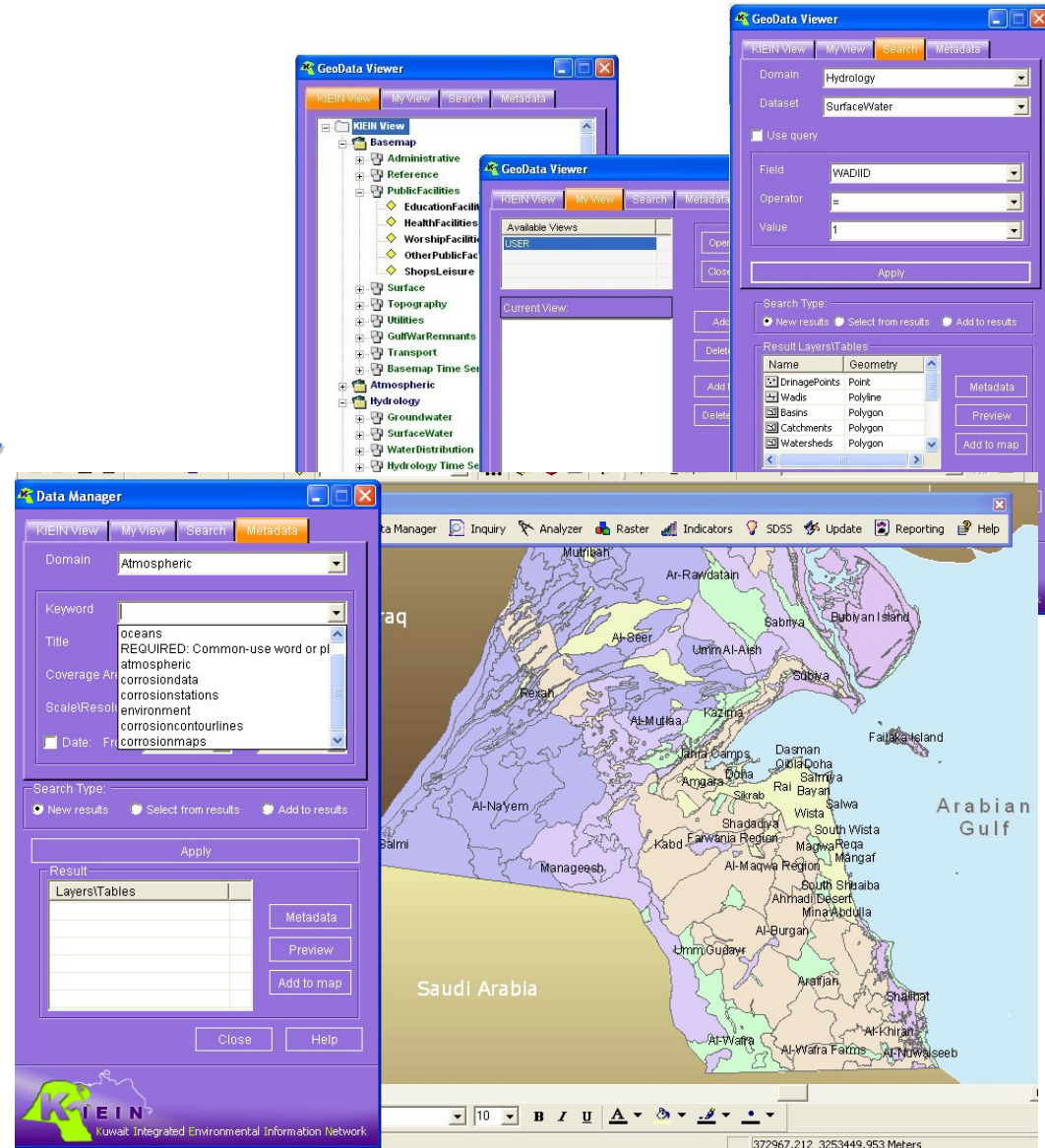
Raster

Berichte

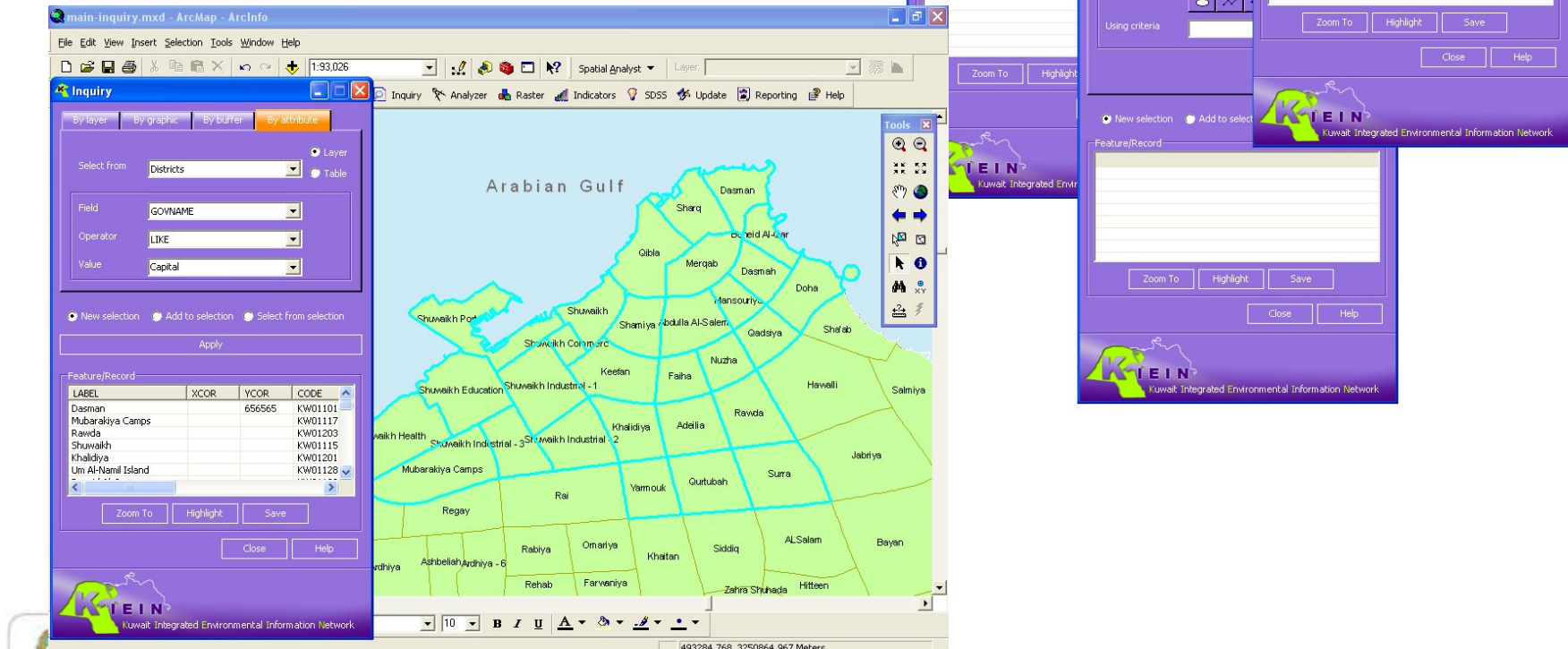
Aktualisierung

Die Einzelmodule

- **Verwaltung** KIEIN-III Geodatabase
- **Manipulation** von Layer
- **Erzeugung** neuer **Layer**
- **Kopieren/Löschen** etc.
- **Benutzerkonten**
- **Metadaten**



- Abfrage nach **Attributen**
- Abfrage nach **Lagekriterien**
- **Erzeugung** von **Teilmengen**



The screenshot displays the ArcMap Inquiry tool interface. The main window shows a map of Kuwait with various districts labeled, such as Dasman, Sharq, Gbala, Merqab, Dasmah, Doha, Shuwaikh, and others. The Inquiry tool is open, showing several dialog boxes for searching and selecting features.

The Inquiry tool has four tabs: "By layer", "By graphic", "By buffer", and "By attribute". The "By attribute" tab is selected, showing the following settings:

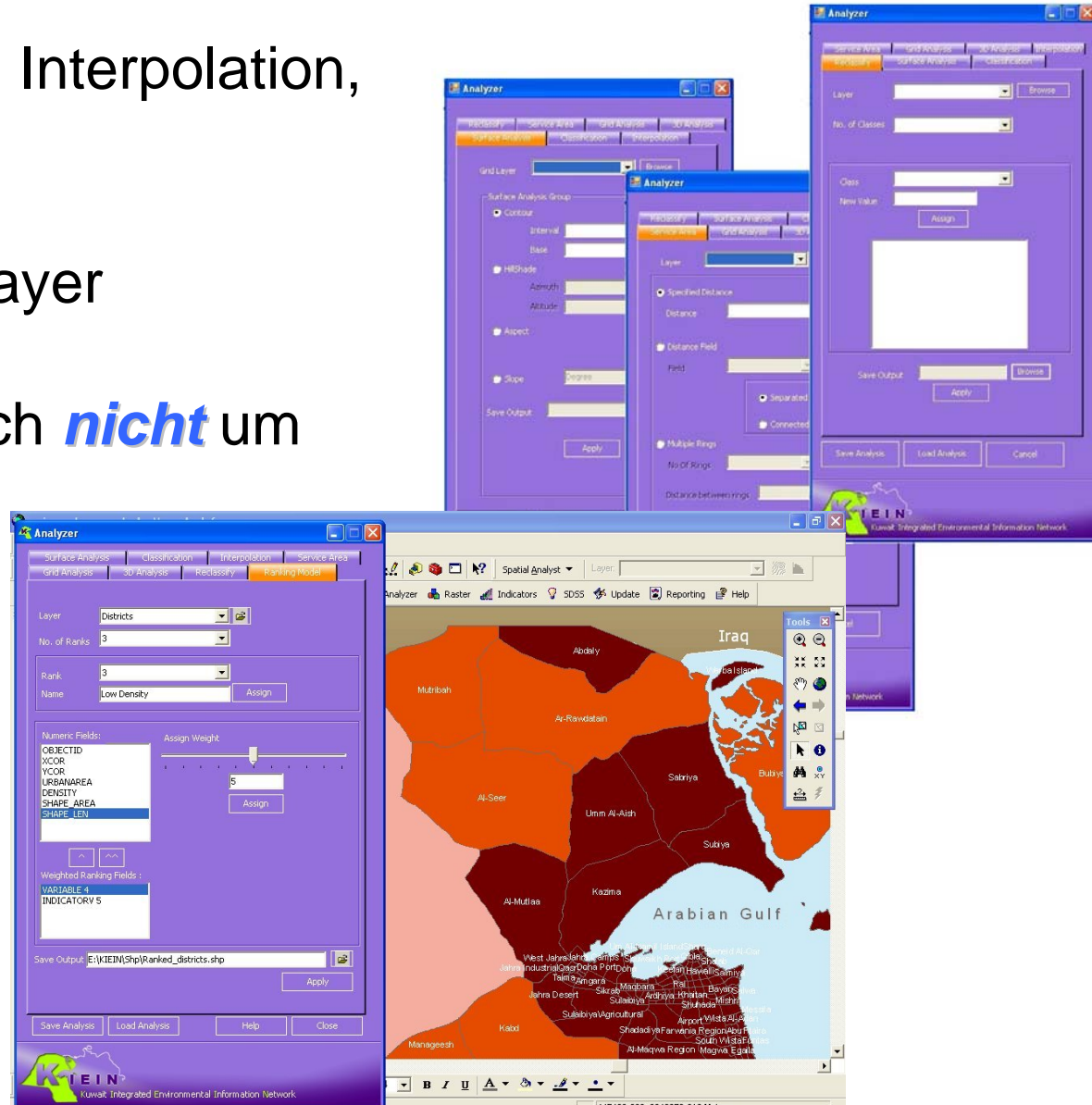
- Select from: Districts
- Field: GOVNAME
- Operator: LIKE
- Value: Capital

The "Feature/Record" table is displayed below the dialog box:

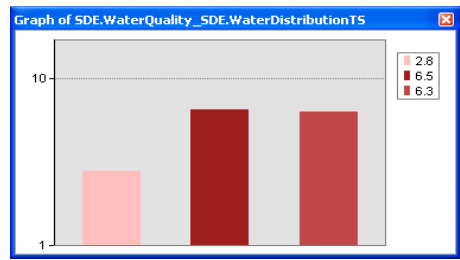
LABEL	XCOR	YCOR	CODE
Dasman		656565	KW01101
Mubarakiya Camps			KW01117
Rawda			KW01203
Shuwaikh			KW01115
Khaldiya			KW01201
Um Al-Naml Island			KW01128

Other dialog boxes shown include "Search by buffer" and "Search by attribute" (with "SDE.SeaWaterQuality_SDE.Sea" selected). The "Feature/Record" table in these dialog boxes is empty. The bottom of the screen shows the KISA and UNDP logos, and the text "Kuwait Integrated Environmental Information Network".

- **Geoprocessing** (3D, Interpolation, Buffer etc.)
- **Erzeugung neuer Layer**
- **Benutzer** braucht sich **nicht** um **Datenbank** kümmern



- **Gewichtung** von **Umweltindikatoren**
- **Ranking**
- **Visualisierung** der **Rankings (Diagramme)**
- **Zeitreihenanalysen**



Time series

Phosphates 1/1/1996

1/1/1996 12/1/1998

Interpolate

IDW Interval (sec) 3 Classification

Play

Sensitivity

	BF	RF	ICF	VI	RSI	Rank
Concrete sea wall and harbor structure	5	0	0	10		
Beach rock outcrop	4	0	0	9		
Fine sand beach	3	0	0	8		
Medium to coarse sand beach	4	1	9	7		
Hard sand mud tidal flat (low productivity)	1	5	8	3		

Biodiversity information

Selected Features

- MarineSpeciesObservations
- Fisheries
 - 1
 - 2
 - 3
 - 4
 - 5

Information

NEAR SHORE FISH

SPECIES

- Ilisha spp.
- Sardinella spp.
- Allanetta forskali
- Platycephalus indicus
- Epinephelus tauvina (I)

S4 << >>

Close

Time series

I want to know (1,2,4-trimethylbenzene) for:

Feature Value Time

With following parameters:

Min

Max

10

10

Find Timeline...

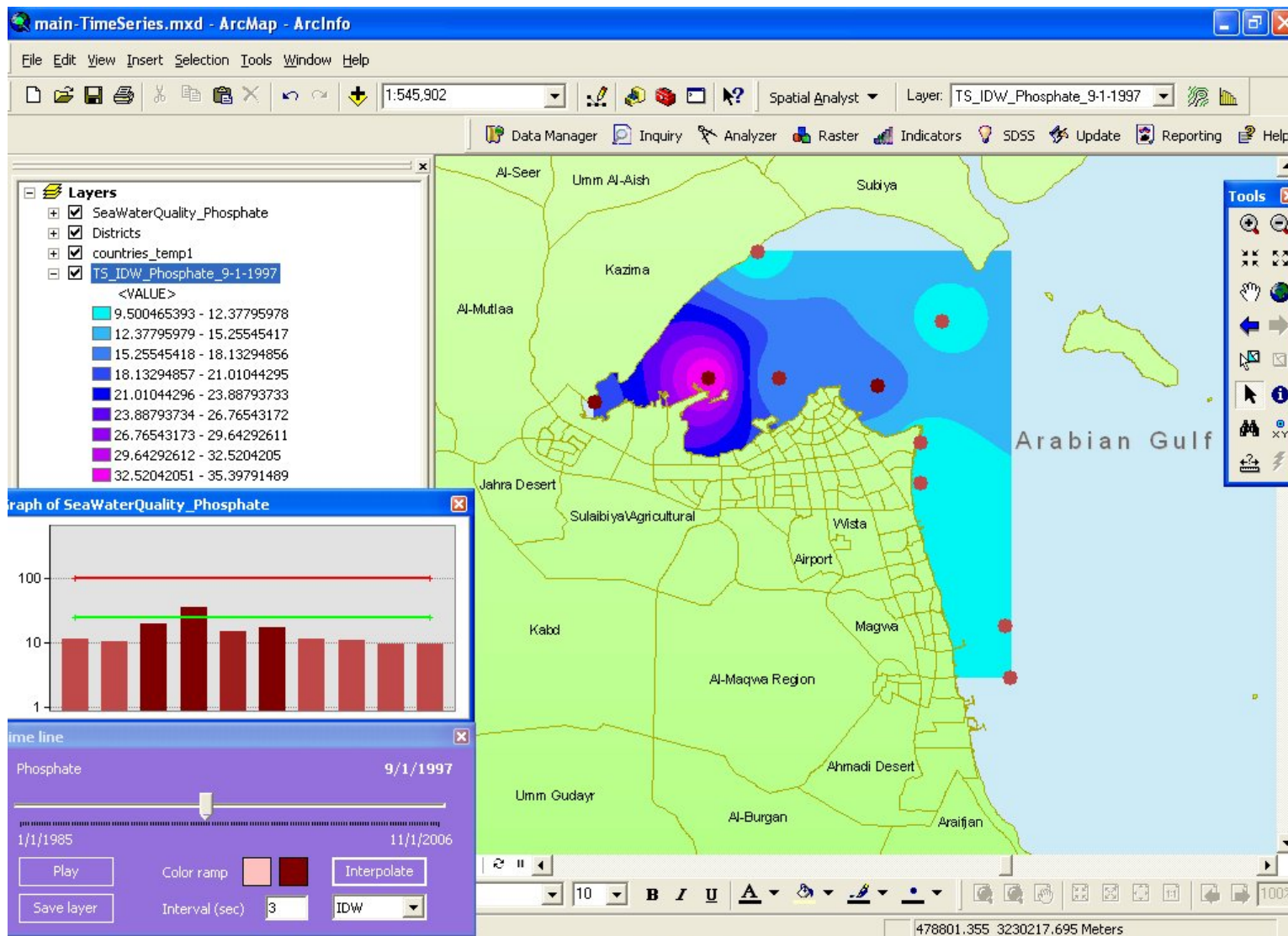
Back Close Help

Info Close

Information Network

Integrated Environmental Information Network

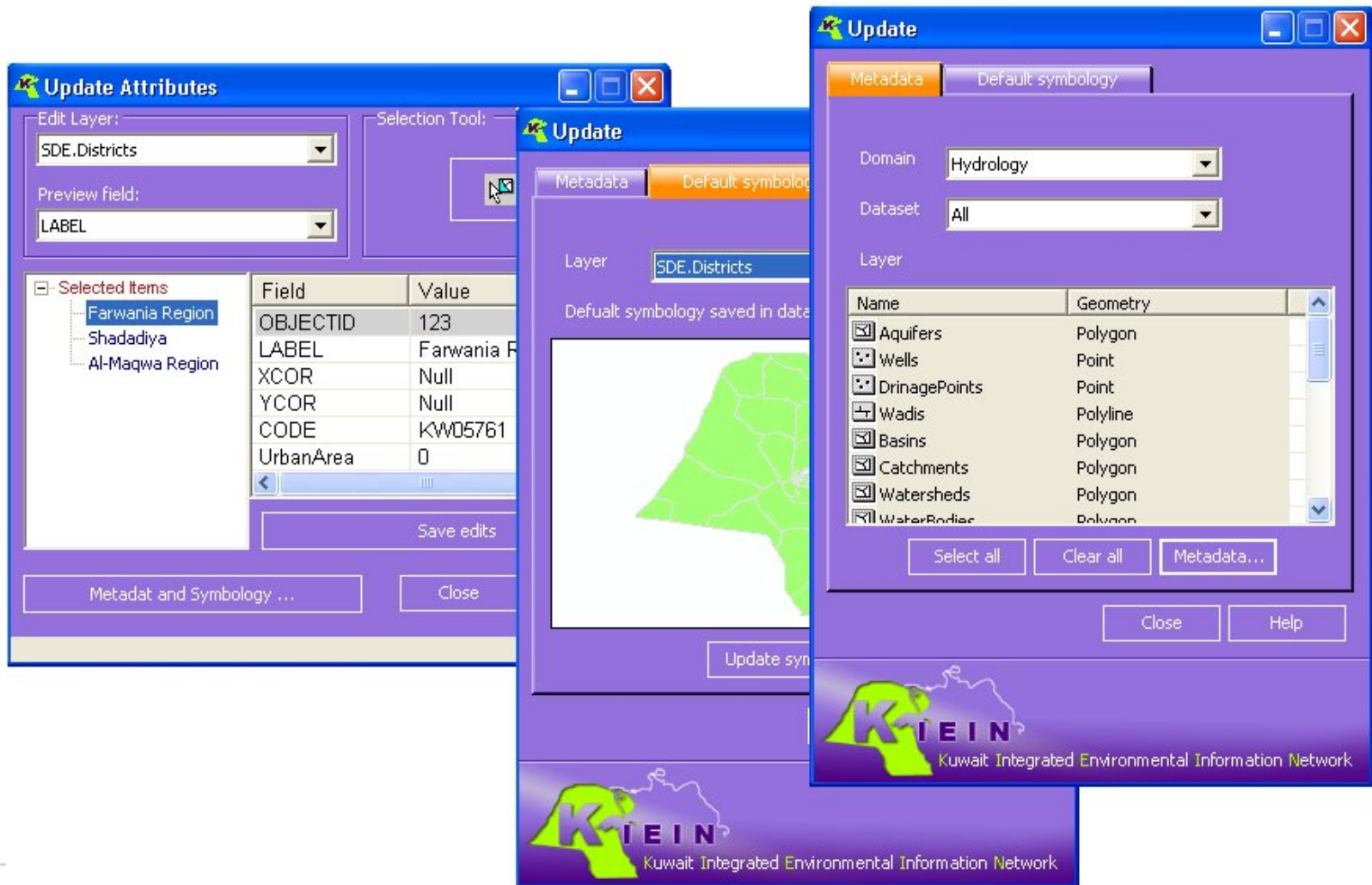




- Erzeugung von **Karten**
- Erzeugung von **Diagrammen**
- Erzeugung von **tab. Übersichten**



■ Aktualisierung von *Attributen* in Tabellen und Layer



Update Attributes

Edit Layer: SDE.Districts
Selection Tool: [Icon]
Preview field: LABEL

Selected Items

- Farwania Region
- Shadadiya
- Al-Maqwa Region

Field	Value
OBJECTID	123
LABEL	Farwania R
XCOR	Null
YCOR	Null
CODE	KW05761
UrbanArea	0

Save edits
Metadat and Symbology ...
Close

Update

Metadata | Default symbology

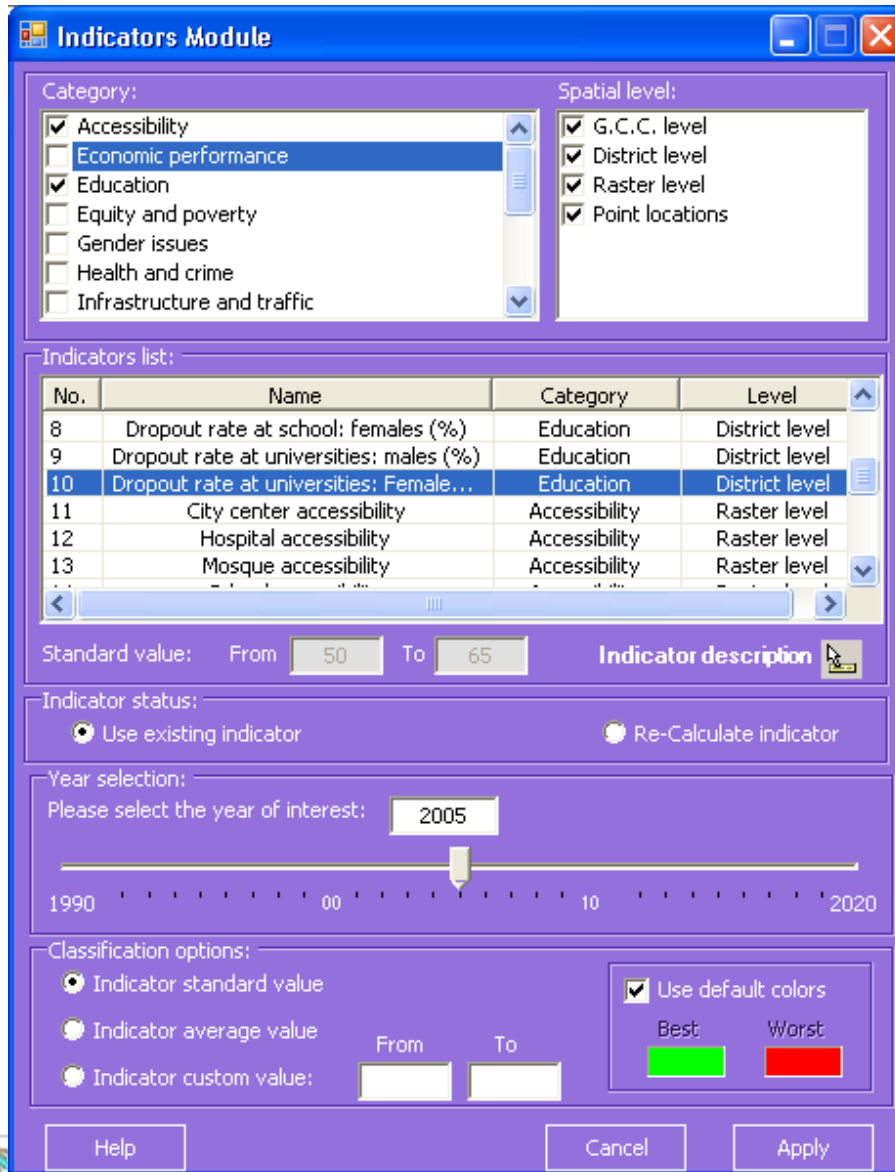
Layer: SDE.Districts
Default symbology saved in data

Name	Geometry
<input checked="" type="checkbox"/> Aquifers	Polygon
<input checked="" type="checkbox"/> Wells	Point
<input checked="" type="checkbox"/> DrainagePoints	Point
<input checked="" type="checkbox"/> Wadis	Polyline
<input checked="" type="checkbox"/> Basins	Polygon
<input checked="" type="checkbox"/> Catchments	Polygon
<input checked="" type="checkbox"/> Watersheds	Polygon
<input checked="" type="checkbox"/> WaterBodies	Polygon

Select all | Clear all | Metadata...
Close | Help

KIEIN
Kuwait Integrated Environmental Information Network

- Visualisierung von **Indikatoren**, nicht von **Daten**
- **Berechnung** der Indikatoren **on-the-fly**
- Automatische **Erzeugung** von Karten/Layern und Ergänzung derselben im TOC
- **Sammlung** und **Kombination** der notwendigen Daten u. Layer aus unterschiedlichen **SQL-Tabellen** und **Domains**
- **Benutzer wählt** Indikator, Jahr, Ebene, Klassifikation, Farben
- Benutzer sollte sich jedoch **nicht** um die zu Grunde liegende **Datenbasis kümmern** müssen



The screenshot shows the 'Indicators Module' window with the following sections:

- Category:** A list of categories with checkboxes. 'Accessibility' is checked. 'Economic performance' is selected in the list.
- Spatial level:** A list of spatial levels with checkboxes. 'G.C.C. level', 'District level', 'Raster level', and 'Point locations' are all checked.
- Indicators list:** A table with columns 'No.', 'Name', 'Category', and 'Level'. Row 10 is selected.
- Standard value:** 'From' 50, 'To' 65.
- Indicator status:** 'Use existing indicator' is selected.
- Year selection:** 'Please select the year of interest: 2005'. A slider below shows the range from 1990 to 2020.
- Classification options:** 'Indicator standard value' is selected. 'Use default colors' is checked. A color legend shows 'Best' as green and 'Worst' as red.

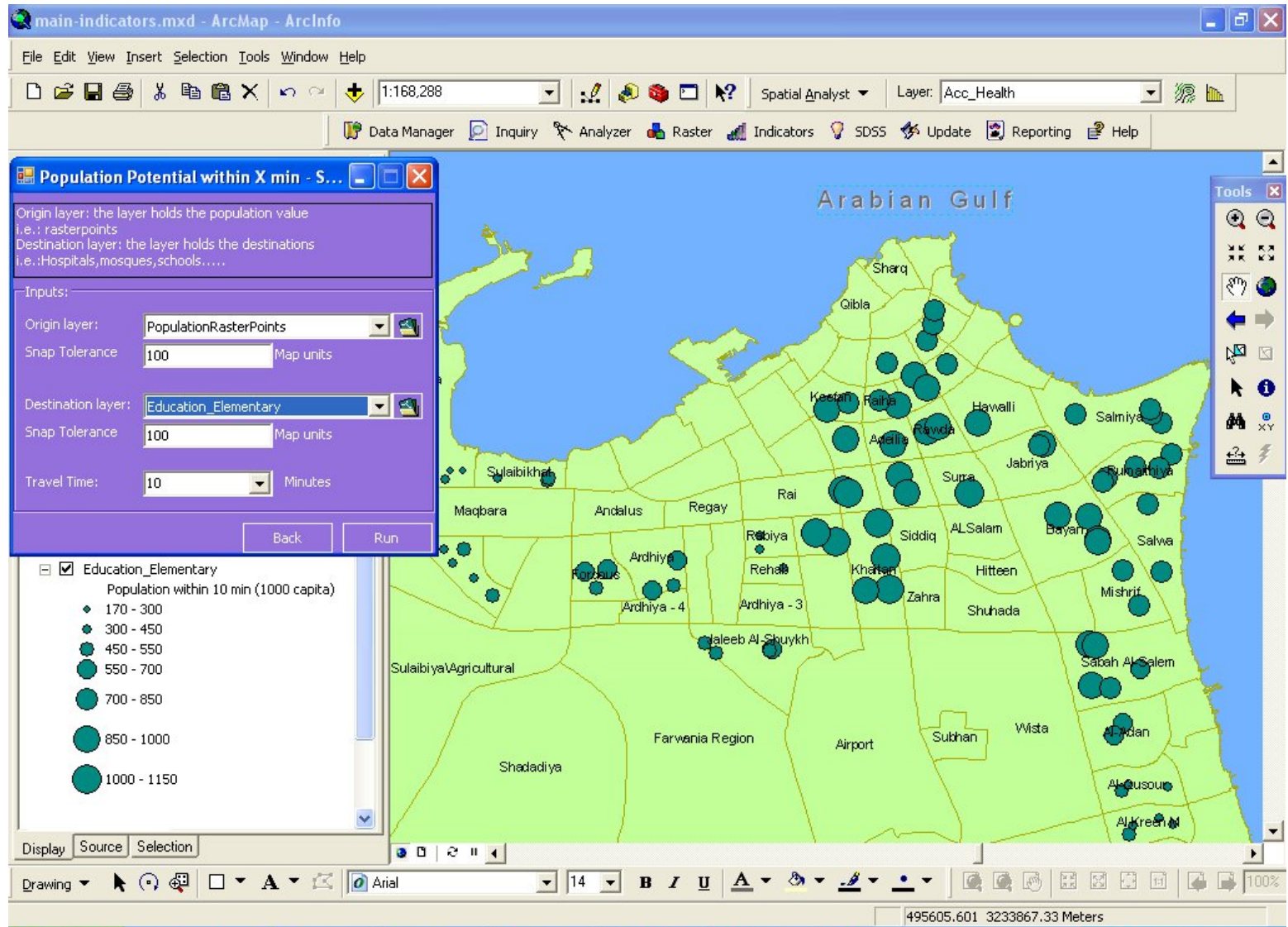
Buttons at the bottom: Help, Cancel, Apply.

Indikatorauswahl

Auswahl Jahr

Kartenlayout

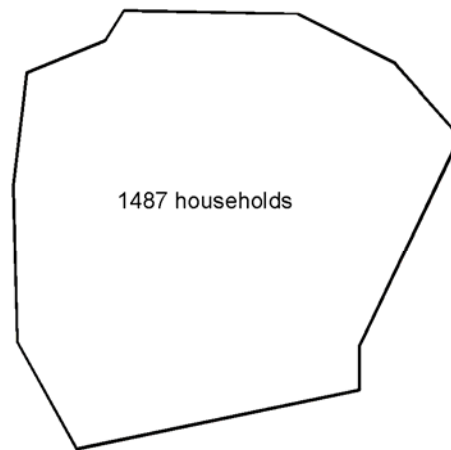
Modul 7. Indikatorenmodul - Indicators (III)



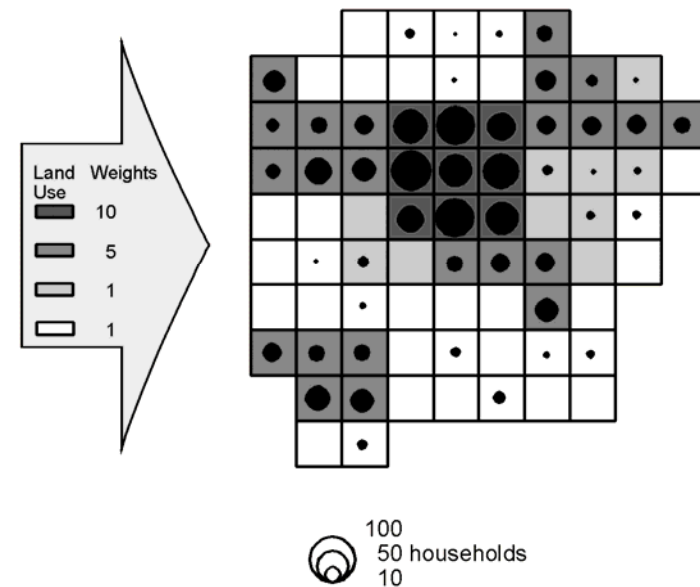
- Zunehmende **Notwendigkeit** räuml. **disaggregierter** Daten
- Generierung **neuer Erkenntnisse** über **räuml. Prozesse**
- **Verbesserung** räuml. **Datenbasen** (Planung/Forschung)
- Raster: Schnittstelle zwischen **sozio-ökon. Statistiken** und **Umweltmodellen**
- Raster: Schnittstelle zwischen **Flächennutzungs-/Verkehrsmodellen** und **Umweltmodellen**
- Räuml. **disaggregierte Daten nicht verfügbar** in Statistiken

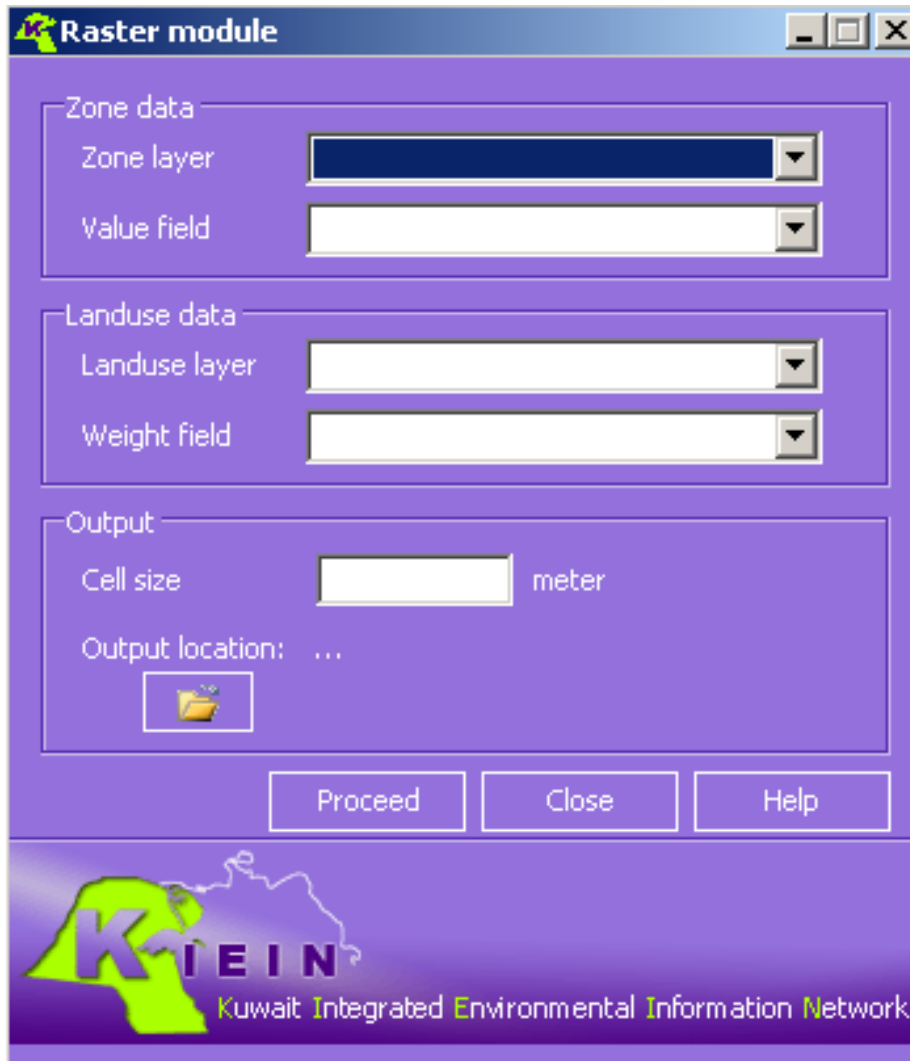
- Schritt 1: **Rasterisierung** der **Flächennutzung** und **Grenzen**
- Schritt 2: **Bestimmung** von **Wahrscheinlichkeiten**
- Schritt 3: **Disaggregation** von **Zonendaten** zu **Mikrodaten**
(Distrikt -> Raster)

Zonal population data



Raster representation of population

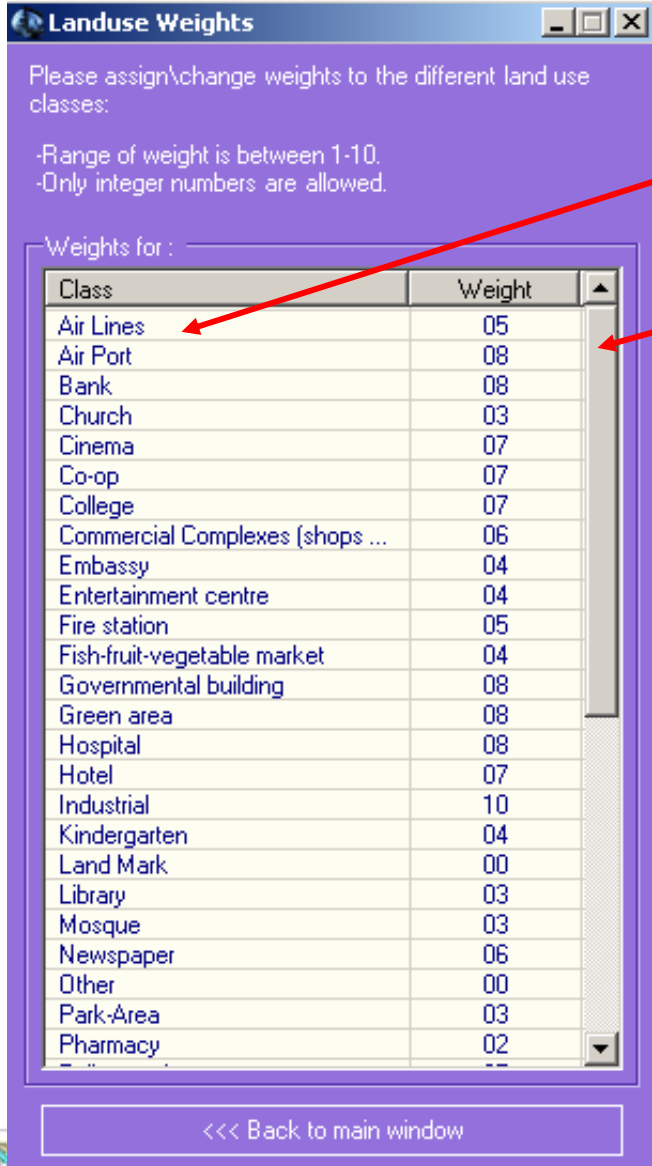




Sozio-ökonom. Indikator

Flächennutzung u. Gewichte

*Informationen zur
Generierung des
Rastersystems*



Please assign/change weights to the different land use classes:

- Range of weight is between 1-10.
- Only integer numbers are allowed.

Weights for :

Class	Weight
Air Lines	05
Air Port	08
Bank	08
Church	03
Cinema	07
Co-op	07
College	07
Commercial Complexes (shops ...	06
Embassy	04
Entertainment centre	04
Fire station	05
Fish-fruit-vegetable market	04
Governmental building	08
Green area	08
Hospital	08
Hotel	07
Industrial	10
Kindergarten	04
Land Mark	00
Library	03
Mosque	03
Newspaper	06
Other	00
Park-Area	03
Pharmacy	02

<<< Back to main window

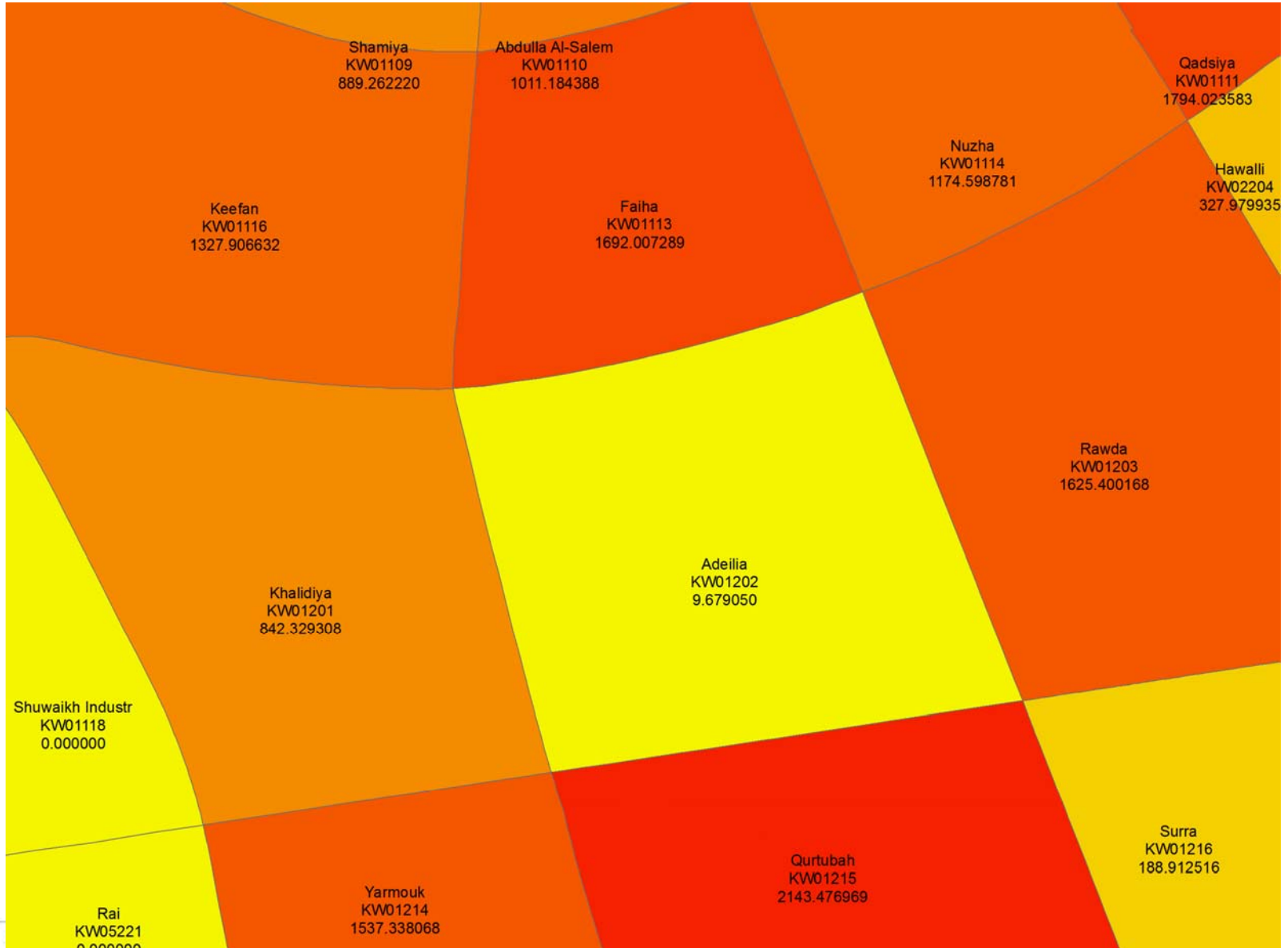
Flächennutzungskategorien

Gewicht (1-10)

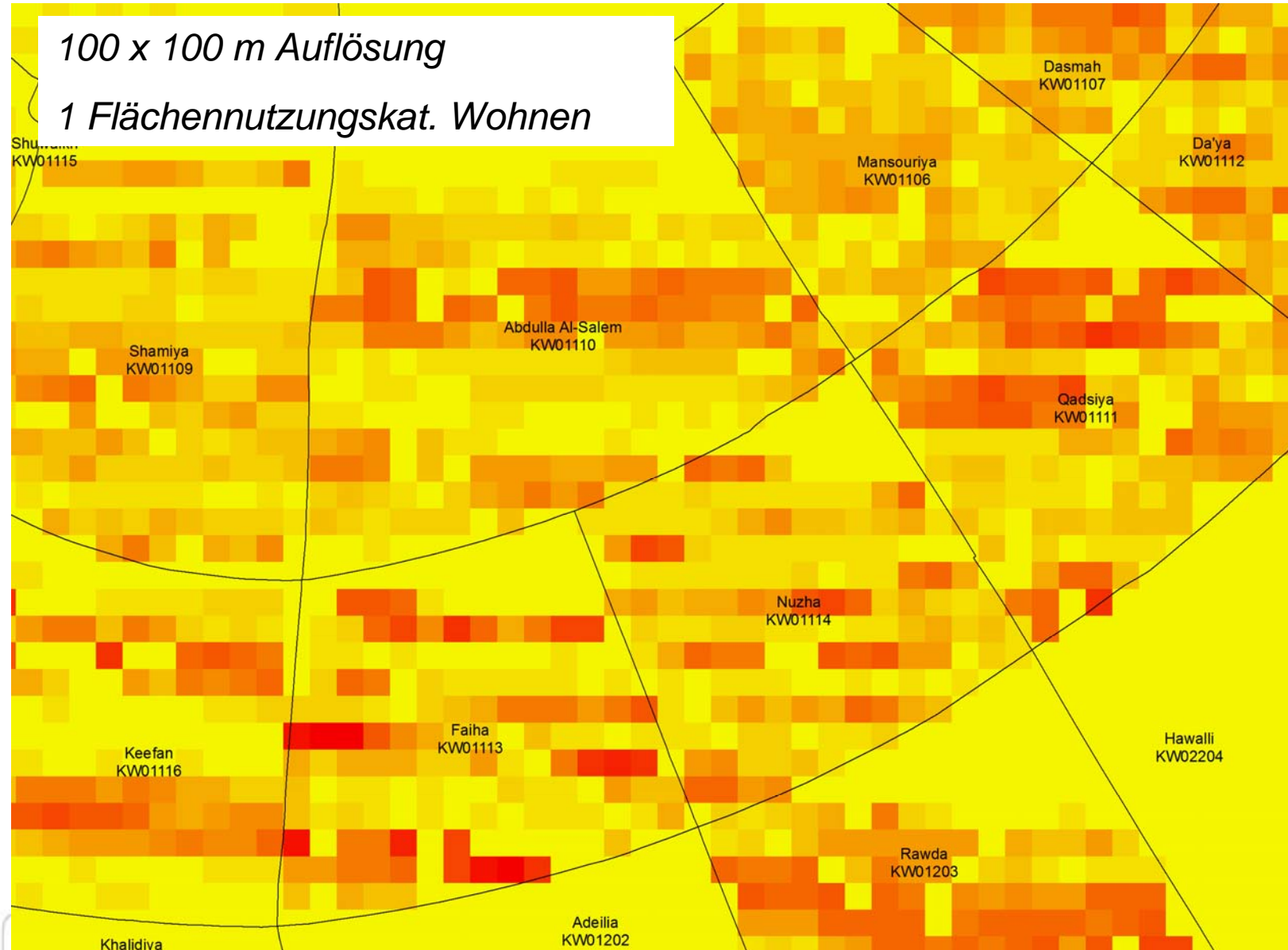
Gewichtungstabelle

Module 8. Raster (V) Beispiel

Traditioneller Ansatz: klass. Dichtekarte



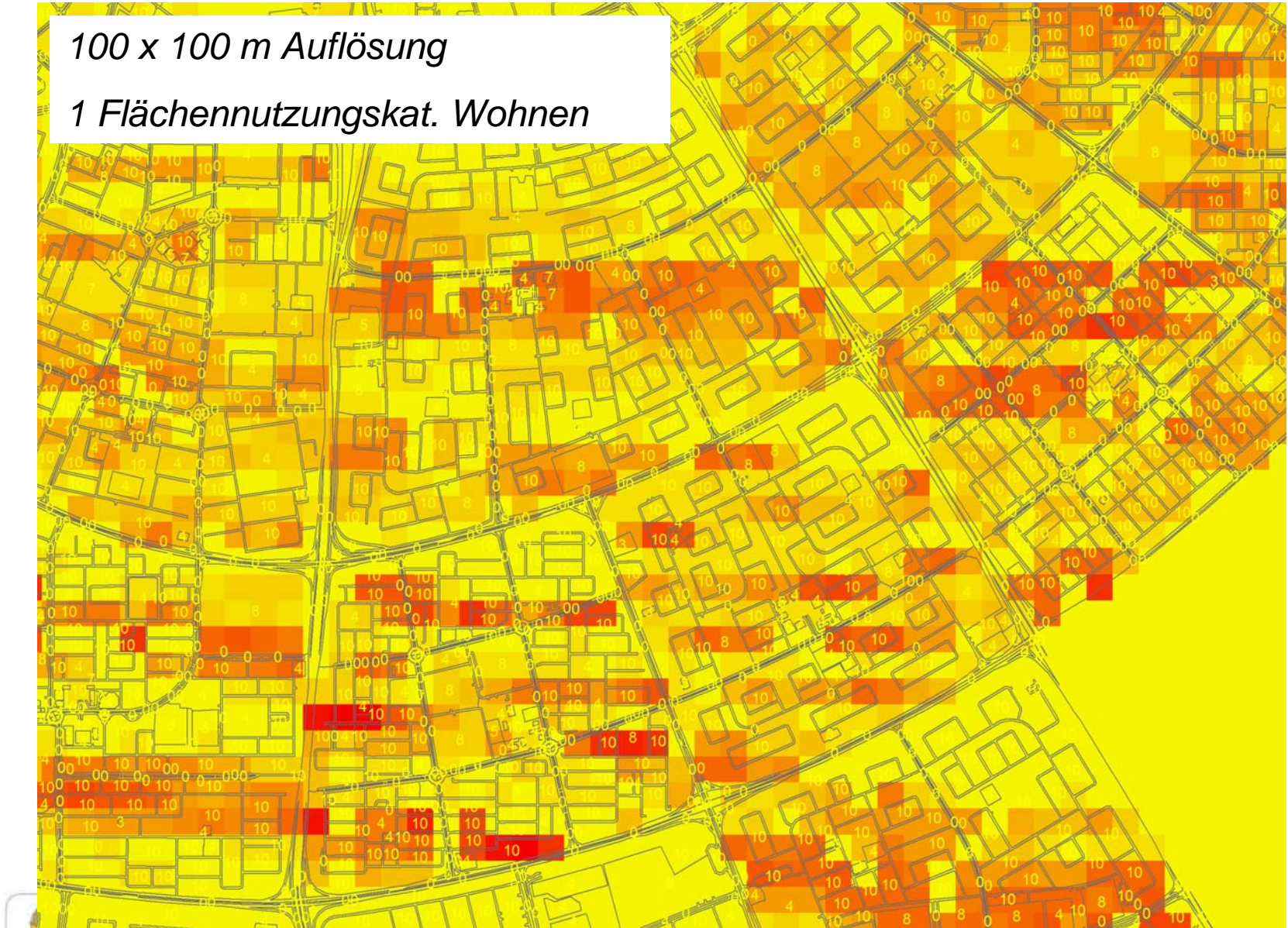
Neuer Ansatz: Dichteoberflächen



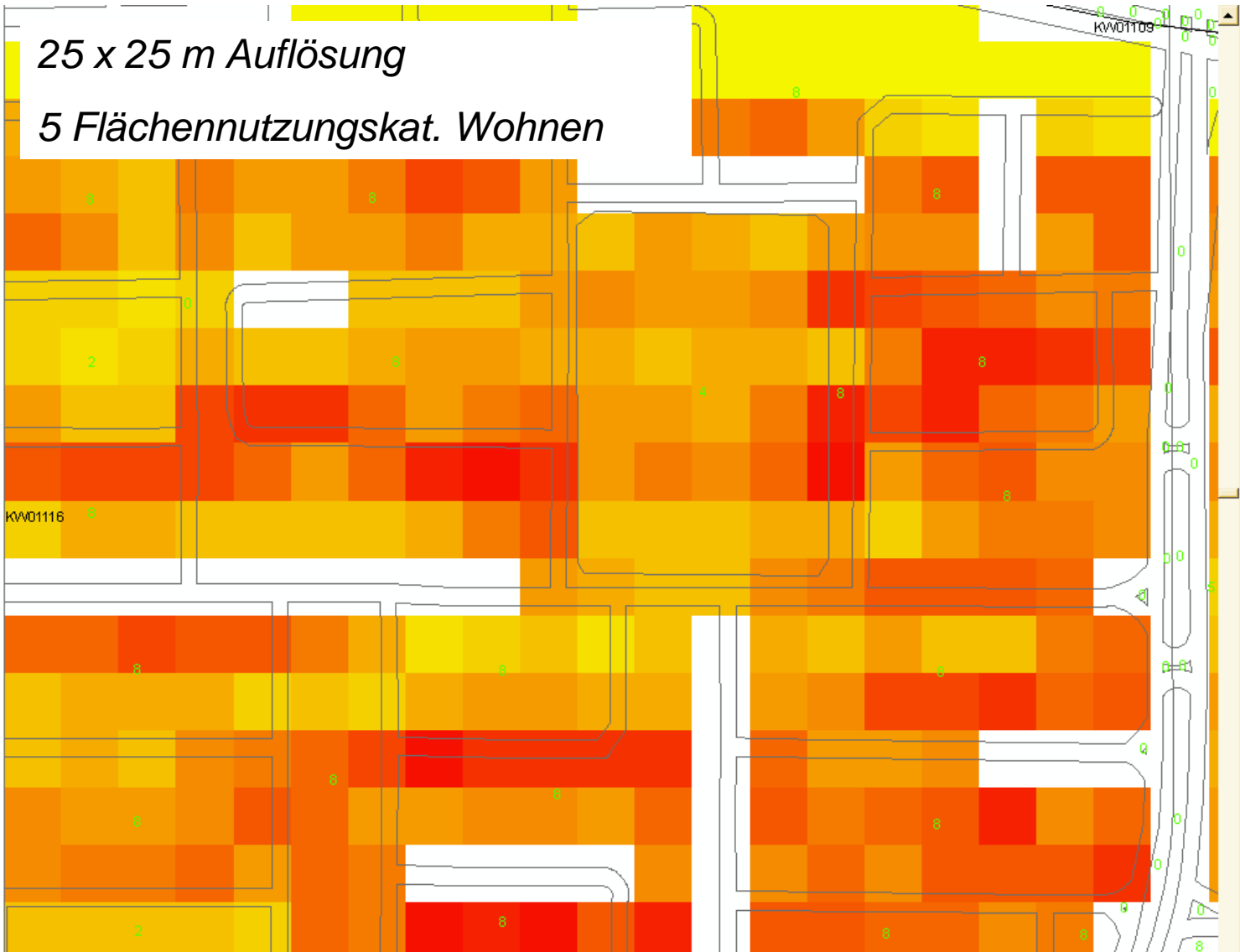
100 x 100 m Auflösung

1 Flächennutzungskat. Wohnen

Neuer Ansatz: Dichteoberflächen



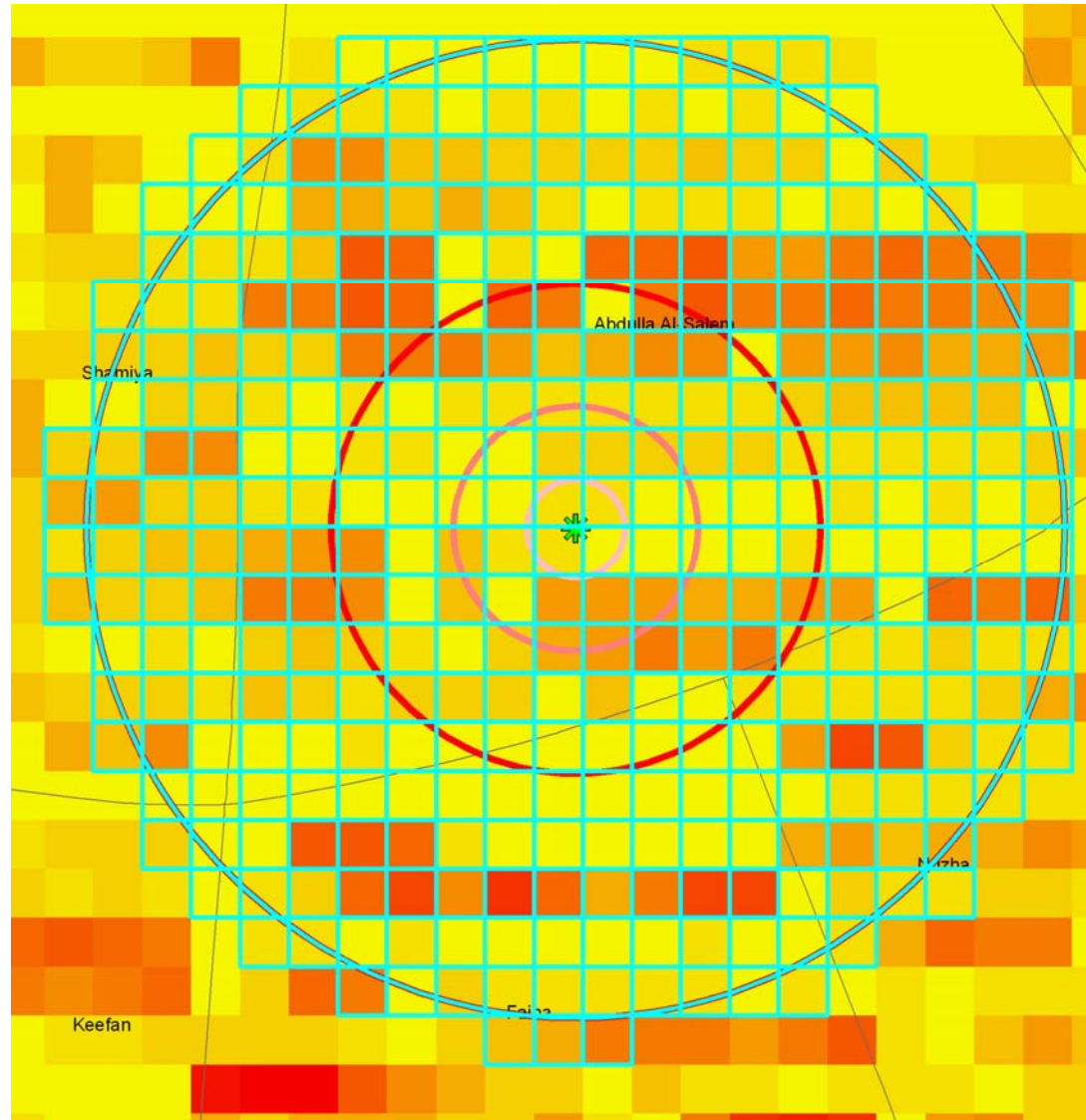
Neuer Ansatz: Dichteoberflächen



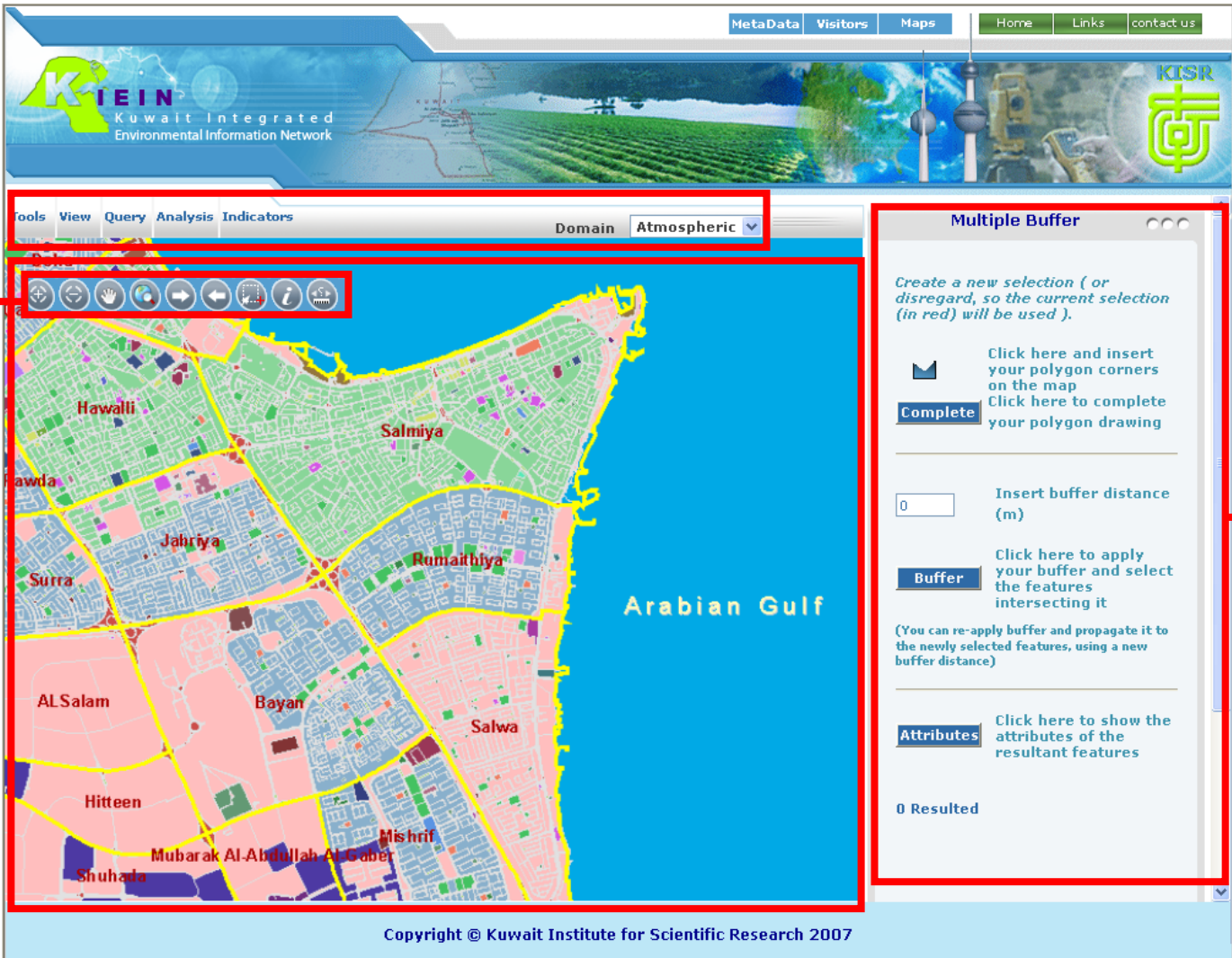
*Beispiel:
Immissionsbelastung mit
Staub/Lärm eines
Industrieemittenten*

Betroffene Bevölkerung

*100 m Radius : 51
250 m Radius: 252
500 m Radius: 986
1.000 m Radius: 3.933
5.000 m Radius: 43.447*



Hauptmenü (1), Toolbar (2), Kartenfläche (3), Legende (4)



1

2

3

4

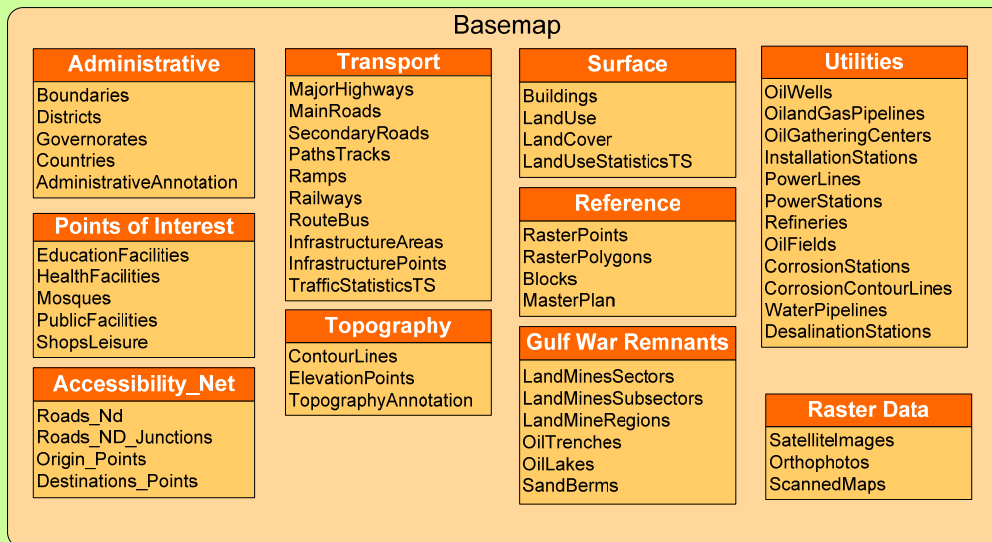
Copyright © Kuwait Institute for Scientific Research 2007

KI EIN-III Datenbank

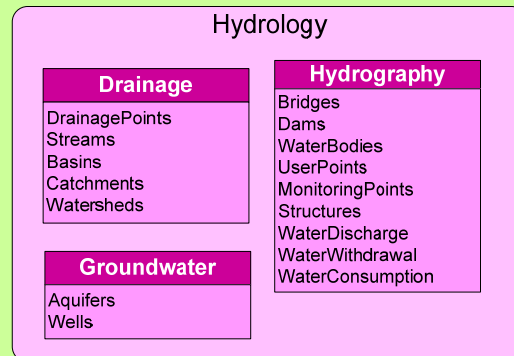
- **Daten-** und **objektorientiertes** Design
- **Standardisierung** (Rückgriff auf u. Modifizierung von ESRI Standarddatenmodellen)
- **Flexibilität** und “Skalierbarkeit”
- Berücksichtigung **existierender** und potenziell **neuer** Datensätze (zukünftige Erweiterungen)
- **Einfache**, klare und logische **Struktur**
- Berücksichtigung **zeitlicher Dynamiken** in den Daten

KISR KIEIN Conceptual Data Model

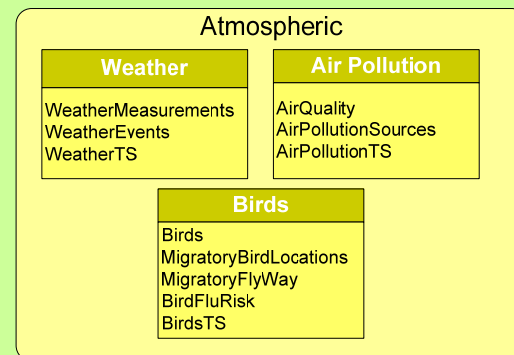
Basemap



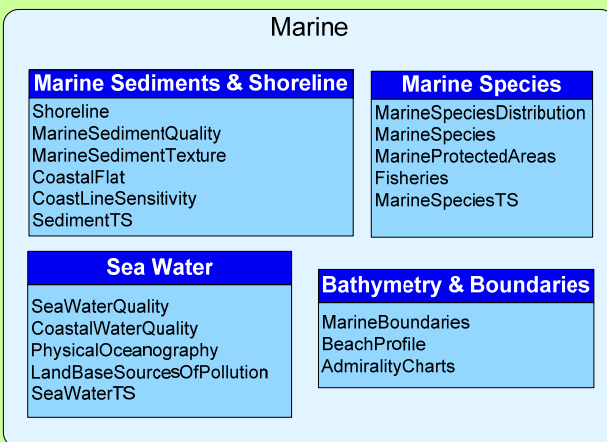
Hydrology



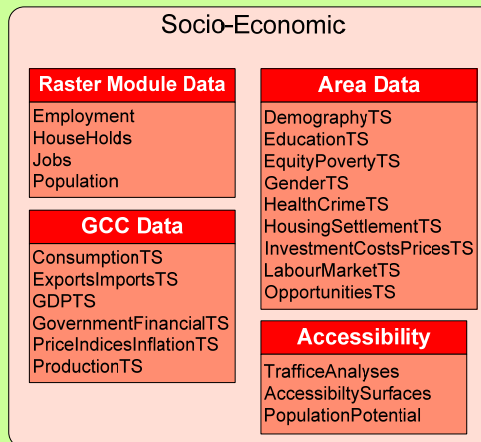
Atmospheric



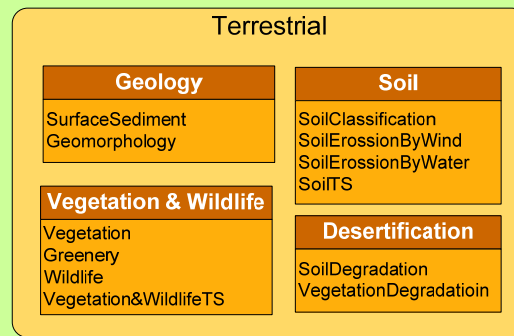
Marine



Socio-Economic



Terrestrial



K I E I N B A S E M A P D A T A M O D E L

Public Facilities

Public Facilities data tables including:

- Public Facilities - General
- Public Facilities - Details
- Public Facilities - Attributes
- Public Facilities - Locations
- Public Facilities - Services

Utilities

Utilities data tables including:

- Utilities - General
- Utilities - Details
- Utilities - Attributes
- Utilities - Locations
- Utilities - Services

Reference

Reference data tables including:

- Reference - General
- Reference - Details
- Reference - Attributes
- Reference - Locations
- Reference - Services

Topography

Topography data tables including:

- Topography - General
- Topography - Details
- Topography - Attributes
- Topography - Locations
- Topography - Services

Administrative

Administrative data tables including:

- Administrative - General
- Administrative - Details
- Administrative - Attributes
- Administrative - Locations
- Administrative - Services

Time Series

Time Series data tables including:

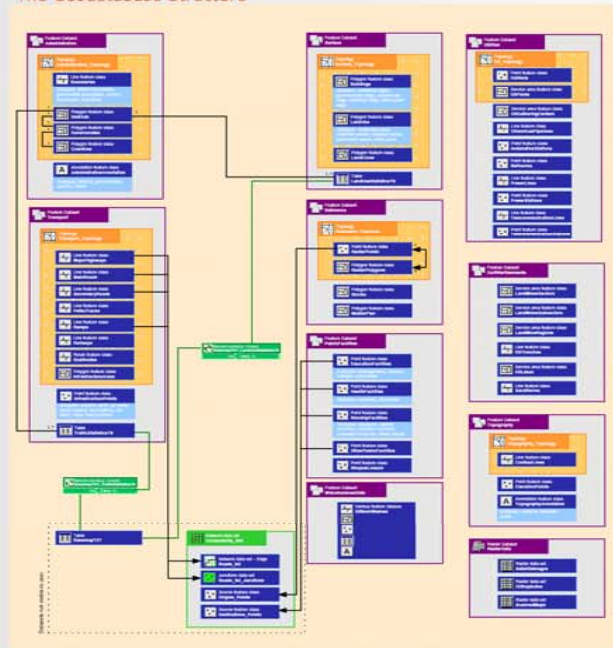
- Time Series - General
- Time Series - Details
- Time Series - Attributes
- Time Series - Locations
- Time Series - Services

Gulf War Remnants

Gulf War Remnants data tables including:

- Gulf War Remnants - General
- Gulf War Remnants - Details
- Gulf War Remnants - Attributes
- Gulf War Remnants - Locations
- Gulf War Remnants - Services

The Geodatabase Structure



Transport

Transport data tables including:

- Transport - General
- Transport - Details
- Transport - Attributes
- Transport - Locations
- Transport - Services

Surface

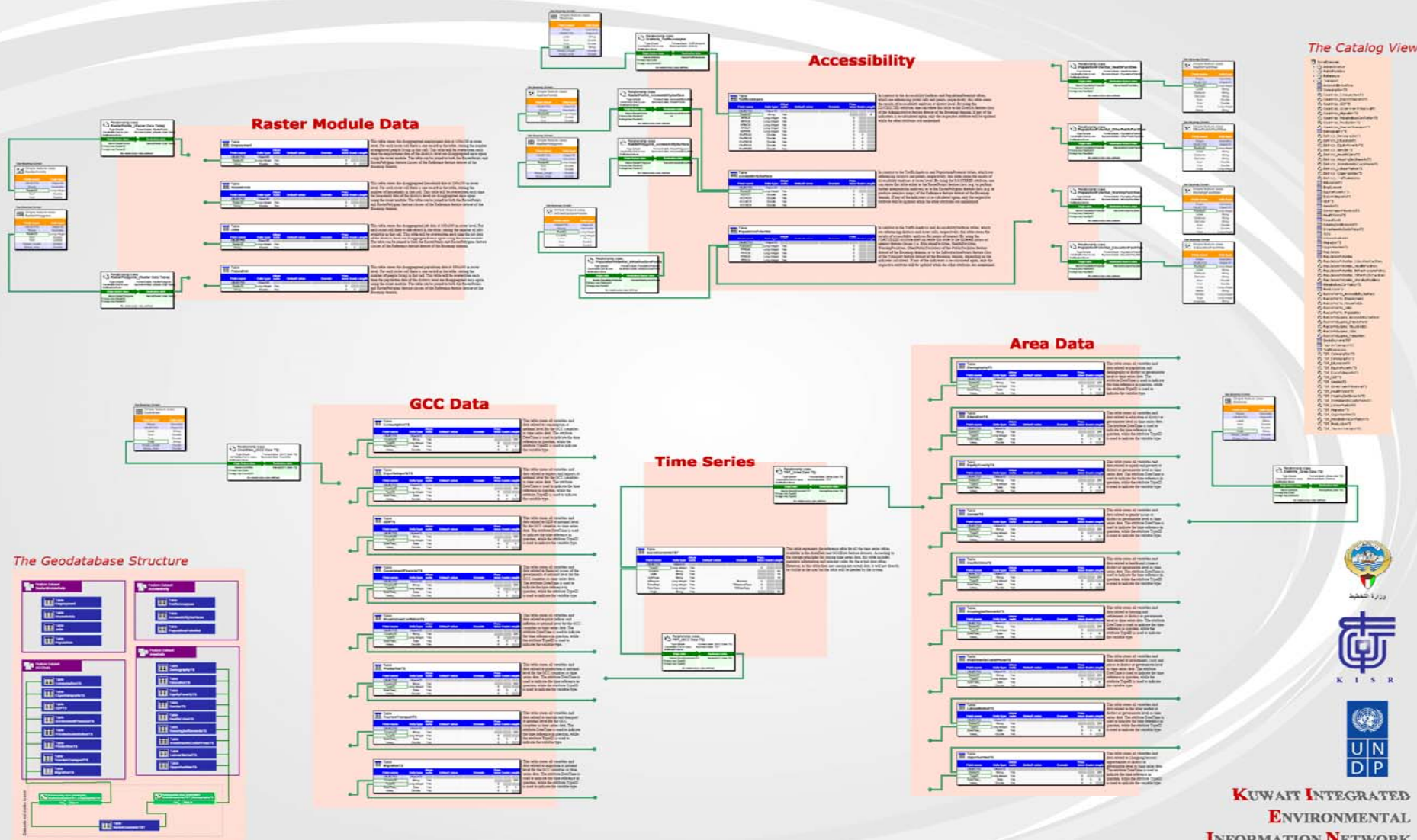
Surface data tables including:

- Surface - General
- Surface - Details
- Surface - Attributes
- Surface - Locations
- Surface - Services

The Catalog View



KIEIN SOCIO-ECONOMIC DATA MODEL



K I E I N T E R R E S T R I A L D A T A M O D E L

Geology



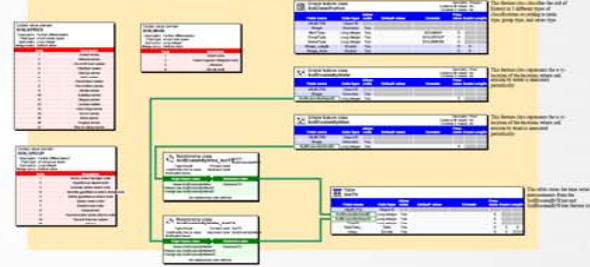
Desertification



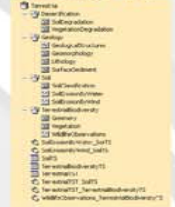
Terrestrial Biodiversity



Soil



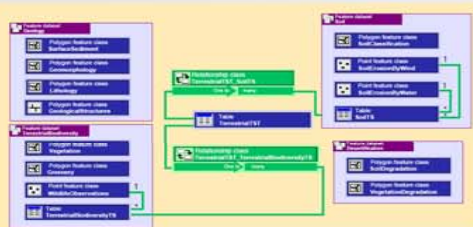
The Catalog View



Time Series



The Geodatabase Structure



وزارة التخطيط

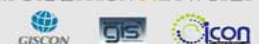


K I S R



UNDP

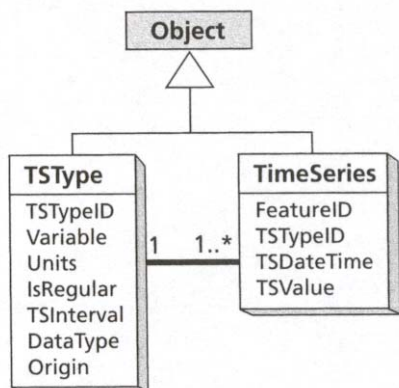
KUWAIT INTEGRATED ENVIRONMENTAL INFORMATION NETWORK



■ **TimeSeries** – Tabelle(n) zum Speichern von Zeitreihendaten

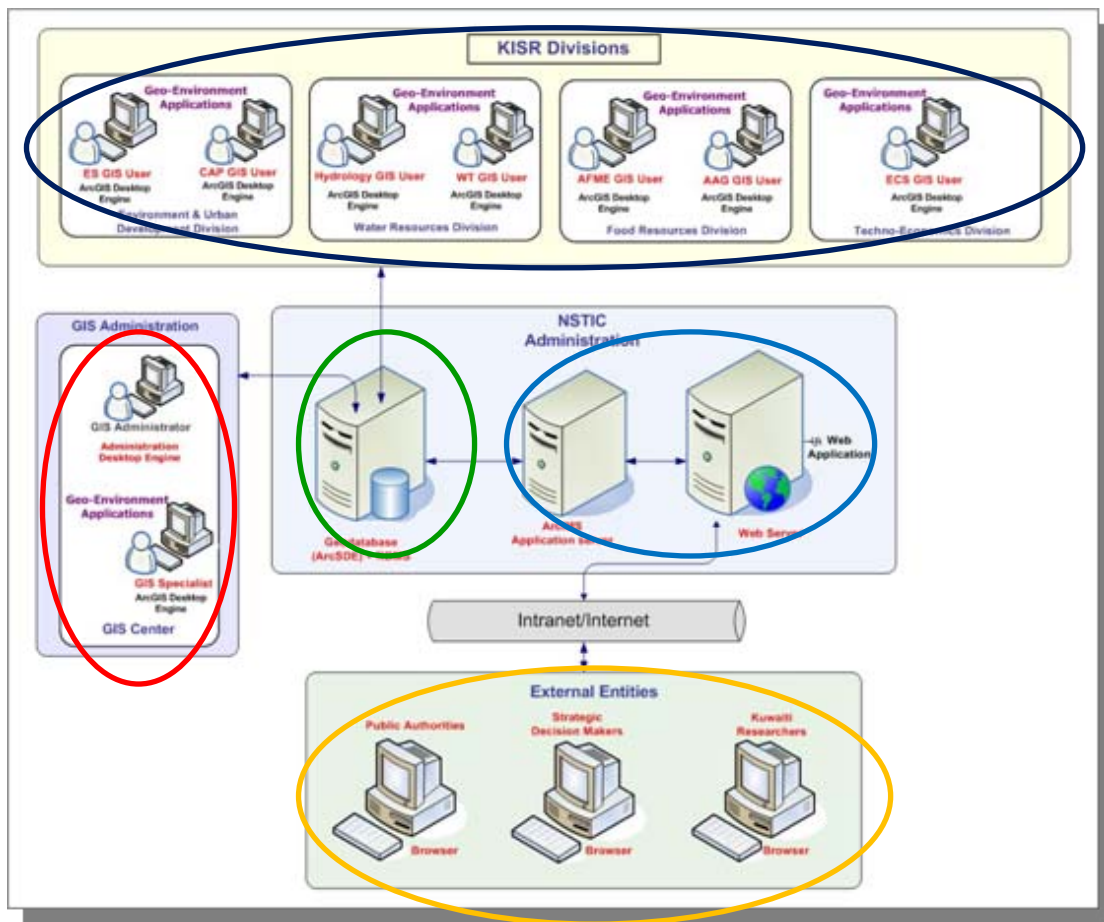
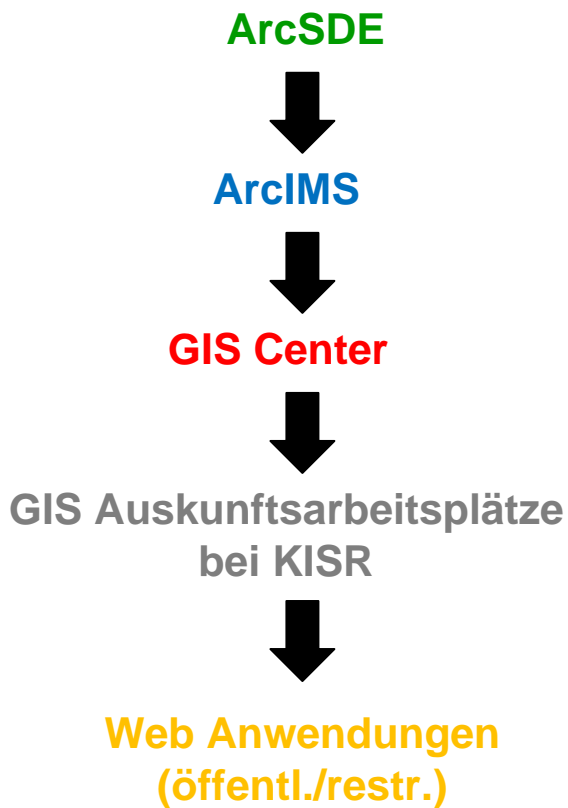
■ **TSType** – Tabelle zur Beschreibung der Datentypen

TSTypeID	Variable	Units	UnitType	IsRegular	TimeStep	TimeUnit	DataType	Origin
1	Streamflow	cfs	Flow	Y	1	day	Interval	Recorded
2	Water Level	feet	Length	Y	15	min	Instantaneous	Modeled
3	Rainfall	inch	Length	Y	1	hour	Interval	Nexrad



OBJECTID	TSTypeID	Variable	Units
1	1	Water levels below land surface	feet
2	2	Dissolved Arsenic (storet code 01000)	UG/L
3			

OBJECTID	FeatureID	TSTypeID	TSDateTime	Qualifier	TSValue
622355	1461	1	3/7/2004		-104
630492	1461	2	8/21/2003	<	2
26660	1461	1	8/21/2003		-113.9
26659	1461	1	12/16/2001		-114.68
26658	1461	1	12/11/2001		-104.65
26657	1461	1	12/5/2000		-118.75
26656	1461	1	12/12/1999		-116.4



Dr. Hamdy El-Gamily (Projektleiter)
Kuwait Institute for Scientific Research
(KISR)
Tel. +965 498 9316
Email: hgamily@kISR.edu.kw

Ahmed Talaat (GIS Consultant)
GISCON Solutions
Danziger Str. 31A
59174 Kamen
Tel. +49 2307 970 790
Email: ahmed.talaat@giscon.de

Maged Samir (GIS Analyst/Designer)
Icon Technologies
Kairo, Ägypten
Tel. (202) 4040010
Email: maged.samir@icon.com.eg

Carsten Schürmann (Socio-Economic Consultant)
Büro für Raumforschung, Raumplanung
und Geoinformation (RRG)
Eichenweg 16
23758 Oldenburg i.H.
Tel. +49 4361 508 777
Email: cs@brrg.de

KIEN Homepage: <http://kien.kISR.edu.kw>